



HOULIHAN LAWRENCE

WARECK D'OSTILIO

New Haven * Milford * Woodbridge * Branford * Old Saybrook

AVAILABLE FOR SALE

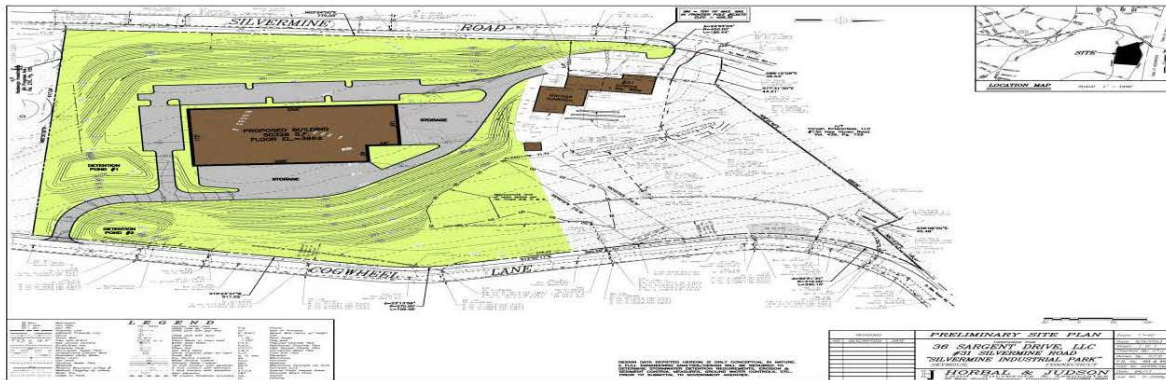
7.83 ACRE Development Site

50,000 SF Warehouse Development or

Possible 100,000 SF 2 Story Self Storage Facility

Or 100,000 SF footprint

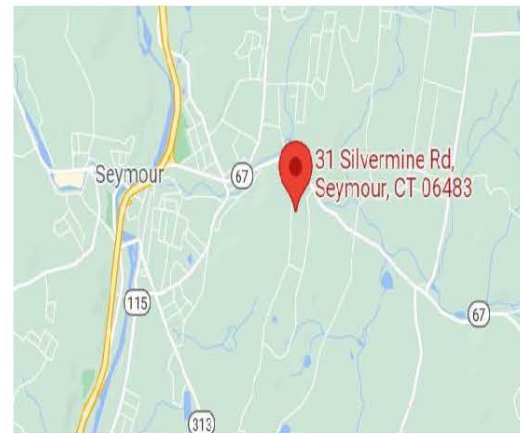
31, 39 & 47 Silvermine Rd, Seymour, CT



**CONTIGUOUS LAND and
BUILDING FOR SALE:
\$1,600,000**

**50,000 SF Warehouse
2 Story (100KSF) Self
Storage
Silvermine Industrial Park**

- GI-2 Zoning for all sites
- 50K SF Footprint
- 100K Two Story Self Storage
- Visibility from Rte 67
- Join Thule, Basement Systems
- Easily accessed from Rte 8 (Exit 22). And Rte 67
- Sign to be visible from Rte 67



Ken Ginsberg
Broker
(203) 376-6266
ken@kngrealty.com

174 Cherry Street
Milford CT 06460
(203) 701-4848





New Haven * Milford * Woodbridge * Branford * Old Saybrook

HOULIHAN LAWRENCE

WARECK D'OSTILIO

Property Information

Total Building SF	50,000 SF to be built
Available SF	100,000 SF possible
Year Built	To be built
Ceiling Height	25'
City Water/Well	City Water
City Sewer/ Septic	City Sewer
Sprinkler	N/A
Loading Dock	N/A
Overhead Door	TBD
Construction	Concrete/Cinder
HVAC	Heat/AC Split
Electric Service	TBD
Gas	In Street
Column Spacing	TBD
# of Floors	1
Parking	Paved Lot Off Street parking
Bathrooms	Average
Frontage	1,300' +/-
Zoning	GI-2
Acreage	17.83 +/- possibly more
Mil Rate	34.71
Taxes	TBD
Taxes / SF	TBD

31, 39 & 47 Silvermine Rd., Seymour, CT 06483

Comments:

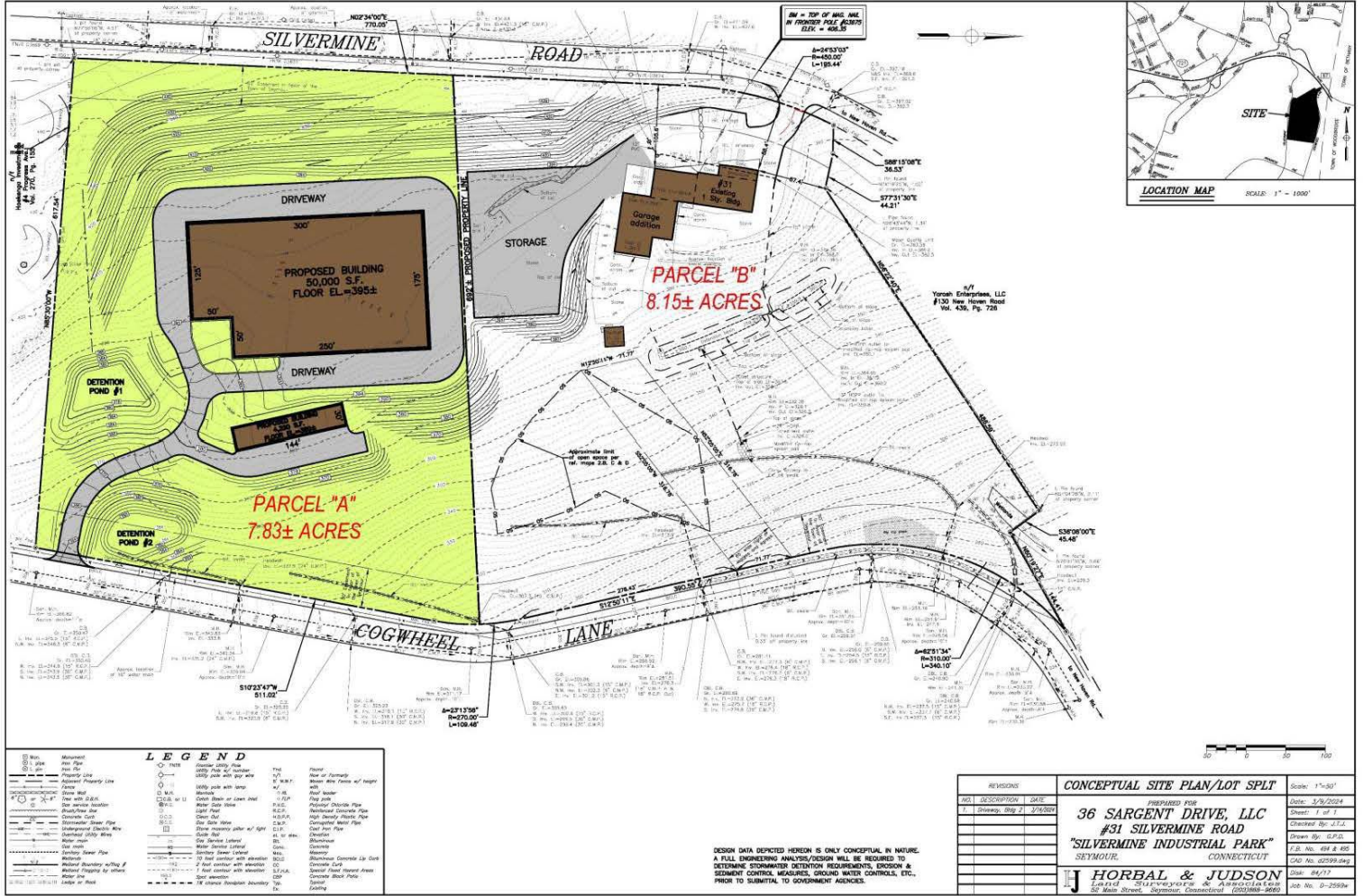
Possible 2 Story Self Storage facility on a 50K SF footprint in the Silvermine Industrial Park or even a 100,000 SF footprint, 1.2 miles from Route 8. minimal competition nearby. 7 Acres zoned GI-2 with signage facing Rte 67. Join Thule and other major companies in this distribution hub. Owner will give easement for signage visible from Rte 67

Ken Ginsberg
Broker
(203) 376-6266
ken@kngrealty.com



174 Cherry Street
Milford CT 06460
(203) 701-4848

This document has been prepared by RLWD Commercial for advertising and general information only. RLWD Commercial makes no guarantees, representations or warranties of any kind, expressed or implied, regarding the information including, but not limited to, warranties of content, accuracy and reliability. Any interested party should undertake their own inquiries as to the accuracy of the information. RLWD Commercial excludes unequivocally all inferred or implied terms, conditions and warranties arising out of this document and excludes all liability for loss and damages arising there from. This publication is the copyrighted property of RLWD Commercial and/or its licensor(s). ©2018. All rights reserved.



DESIGN DATA DEPICTED HEREON IS ONLY CONCEPTUAL IN NATURE. A FULL ENGINEERING ANALYSIS/DESIGN WILL BE REQUIRED TO DETERMINE STORMWATER DETENTION REQUIREMENTS, EROSION & SEDIMENT CONTROL MEASURES, GROUND WATER CONTROLS, ETC., PRIOR TO SUBMITTAL TO GOVERNMENT AGENCIES.



Civilian Labor Force Profile

31 Silvermine Rd, Seymour, Connecticut, 06483
 Ring Band: 0 - 1 mile radius

Prepared by Esri
 Latitude: 41.39508
 Longitude: -73.05016

2021 Labor Force

Age Group	Population	Employed	Unemployed	Unemployment Rate	Labor Force Participation Rate	Employment-Population Ratio
16+	2,873	1,830	122	6.2%	67.9%	64
16-24	337	245	7	2.8%	74.8%	73
25-54	1,310	1,169	46	3.8%	92.7%	89
55-64	540	311	21	6.3%	61.5%	58
65+	686	106	47	30.7%	22.3%	15

Economic Dependency Ratio

Total	87.2
Child (<16)	30.3
Working-Age (16-64)	25.2
Senior (65+)	31.7

Industry	Employed	Percent	US Percent	Location Quotient
Total	1,830	100.0%	100.0%	-
Agriculture/Forestry/Fishing	10	0.5%	1.3%	0.38
Mining/Quarrying/Oil & Gas	0	0.0%	0.4%	0.00
Construction	182	9.9%	7.1%	1.34
Manufacturing	267	14.6%	9.9%	1.38
Wholesale Trade	25	1.4%	2.5%	0.56
Retail Trade	194	10.6%	10.7%	1.09
Transportation/Warehousing	69	3.8%	5.1%	0.81
Utilities	20	1.1%	0.9%	1.22
Information	25	1.4%	1.8%	0.78
Finance/Insurance	111	6.1%	5.2%	1.24
Real Estate/Rental/Leasing	15	0.8%	1.9%	0.38
Professional/Scientific/Tech	104	5.7%	8.3%	0.70
Management of Companies	0	0.0%	0.1%	0.00
Admin/Support/Waste Management	54	3.0%	3.7%	0.77
Educational Services	146	8.0%	9.3%	0.82
Health Care/Social Assistance	323	17.7%	14.8%	1.17
Arts/Entertainment/Recreation	24	1.3%	1.5%	0.81
Accommodation/Food Services	44	2.4%	5.9%	0.43
Other Services (Excluding Public)	127	6.9%	4.5%	1.50
Public Administration	92	5.0%	5.2%	1.04

Data Note: Location Quotients compare the industry/occupation share of a local area's employment relative to that same share nationally. A value lower/greater than 1 indicates that the local area is less/more specialized in that industry or occupation category than the US as a whole.

Explore the Esri Labor Force Learn Lesson for more information on how to use and interpret the estimates in this report.

Source: Esri forecasts for 2021 and 2026.



Civilian Labor Force Profile

31 Silvermine Rd, Seymour, Connecticut, 06483
 Ring Band: 0 - 1 mile radius

Prepared by Esri
 Latitude: 41.39508
 Longitude: -73.05016

Occupation	Employed	Percent	US Percent	Location Quotient
Total	1,830	100.0%	100.0%	-
White Collar	1,193	65.2%	63.1%	1.06
Management	276	15.1%	11.8%	1.48
Business/Financial	51	2.8%	6.1%	0.55
Computer/Mathematical	42	2.3%	3.9%	0.77
Architecture/Engineering	58	3.2%	1.9%	1.60
Life/Physical/Social Sciences	51	2.8%	1.1%	3.11
Community/Social Service	13	0.7%	1.9%	0.39
Legal	43	2.3%	1.2%	1.92
Education/Training/Library	141	7.7%	6.1%	1.20
Arts/Design/Entertainment	27	1.5%	1.9%	0.83
Healthcare Practitioner	129	7.0%	6.8%	1.11
Sales and Sales Related	140	7.7%	9.3%	0.79
Office/Administrative Support	222	12.1%	11.2%	0.91
Blue Collar	430	23.5%	21.8%	1.09
Farming/Fishing/Forestry	0	0.0%	0.6%	0.00
Construction/Extraction	110	6.0%	5.2%	1.11
Installation/Maintenance/Repair	74	4.0%	2.9%	1.29
Production	127	6.9%	5.2%	1.17
Transportation/Material Moving	119	6.5%	7.9%	1.07
Services	210	11.5%	15.1%	0.68
Healthcare Support	38	2.1%	3.5%	0.78
Protective Service	83	4.5%	2.1%	2.05
Food Preparation/Serving	33	1.8%	4.3%	0.41
Building Maintenance	16	0.9%	3.3%	0.23
Personal Care/Service	40	2.2%	1.8%	0.61

Data Note: Location Quotients compare the industry/occupation share of a local area's employment relative to that same share nationally. A value lower/greater than 1 indicates that the local area is less/more specialized in that industry or occupation category than the US as a whole.

Explore the Esri Labor Force Learn Lesson for more information on how to use and interpret the estimates in this report.

Source: Esri forecasts for 2021 and 2026.



Civilian Labor Force Profile

31 Silvermine Rd, Seymour, Connecticut, 06483
 Ring Band: 1 - 5 mile radius

Prepared by Esri
 Latitude: 41.39508
 Longitude: -73.05016

2021 Labor Force

Age Group	Population	Employed	Unemployed	Unemployment Rate	Labor Force Participation Rate	Employment-Population Ratio
16+	48,723	29,342	3,047	9.4%	66.5%	60
16-24	5,747	2,667	438	14.1%	54.0%	46
25-54	22,251	17,294	1,695	8.9%	85.3%	78
55-64	9,332	6,491	587	8.3%	75.8%	70
65+	11,392	2,889	327	10.2%	28.2%	25

Economic Dependency Ratio

Total	100.4
Child (<16)	34.4
Working-Age (16-64)	37.0
Senior (65+)	29.0

Industry	Employed	Percent	US Percent	Location Quotient
Total	29,342	100.0%	100.0%	-
Agriculture/Forestry/Fishing	77	0.3%	1.3%	0.23
Mining/Quarrying/Oil & Gas	0	0.0%	0.4%	0.00
Construction	2,045	7.0%	7.1%	0.95
Manufacturing	3,924	13.4%	9.9%	1.26
Wholesale Trade	623	2.1%	2.5%	0.84
Retail Trade	3,238	11.0%	10.7%	1.13
Transportation/Warehousing	1,052	3.6%	5.1%	0.77
Utilities	199	0.7%	0.9%	0.78
Information	468	1.6%	1.8%	0.89
Finance/Insurance	1,696	5.8%	5.2%	1.18
Real Estate/Rental/Leasing	440	1.5%	1.9%	0.71
Professional/Scientific/Tech	2,343	8.0%	8.3%	0.98
Management of Companies	24	0.1%	0.1%	1.00
Admin/Support/Waste Management	924	3.1%	3.7%	0.79
Educational Services	3,100	10.6%	9.3%	1.09
Health Care/Social Assistance	5,224	17.8%	14.8%	1.18
Arts/Entertainment/Recreation	223	0.8%	1.5%	0.50
Accommodation/Food Services	1,155	3.9%	5.9%	0.70
Other Services (Excluding Public)	1,325	4.5%	4.5%	0.98
Public Administration	1,262	4.3%	5.2%	0.90

Data Note: Location Quotients compare the industry/occupation share of a local area's employment relative to that same share nationally. A value lower/greater than 1 indicates that the local area is less/more specialized in that industry or occupation category than the US as a whole.

Explore the Esri Labor Force Learn Lesson for more information on how to use and interpret the estimates in this report.

Source: Esri forecasts for 2021 and 2026.



Civilian Labor Force Profile

31 Silvermine Rd, Seymour, Connecticut, 06483
 Ring Band: 1 - 5 mile radius

Prepared by Esri
 Latitude: 41.39508
 Longitude: -73.05016

Occupation	Employed	Percent	US Percent	Location Quotient
Total	29,342	100.0%	100.0%	-
White Collar	20,129	68.6%	63.1%	1.11
Management	4,133	14.1%	11.8%	1.38
Business/Financial	1,820	6.2%	6.1%	1.22
Computer/Mathematical	914	3.1%	3.9%	1.03
Architecture/Engineering	893	3.0%	1.9%	1.50
Life/Physical/Social Sciences	443	1.5%	1.1%	1.67
Community/Social Service	434	1.5%	1.9%	0.83
Legal	420	1.4%	1.2%	1.17
Education/Training/Library	2,186	7.5%	6.1%	1.17
Arts/Design/Entertainment	423	1.4%	1.9%	0.78
Healthcare Practitioner	2,188	7.5%	6.8%	1.19
Sales and Sales Related	2,541	8.7%	9.3%	0.90
Office/Administrative Support	3,734	12.7%	11.2%	0.95
Blue Collar	5,295	18.0%	21.8%	0.84
Farming/Fishing/Forestry	2	0.0%	0.6%	0.00
Construction/Extraction	1,295	4.4%	5.2%	0.81
Installation/Maintenance/Repair	1,008	3.4%	2.9%	1.10
Production	1,601	5.5%	5.2%	0.93
Transportation/Material Moving	1,389	4.7%	7.9%	0.77
Services	3,918	13.4%	15.1%	0.79
Healthcare Support	1,079	3.7%	3.5%	1.37
Protective Service	805	2.7%	2.1%	1.23
Food Preparation/Serving	886	3.0%	4.3%	0.68
Building Maintenance	495	1.7%	3.3%	0.44
Personal Care/Service	653	2.2%	1.8%	0.61

Data Note: Location Quotients compare the industry/occupation share of a local area's employment relative to that same share nationally. A value lower/greater than 1 indicates that the local area is less/more specialized in that industry or occupation category than the US as a whole.

Explore the Esri Labor Force Learn Lesson for more information on how to use and interpret the estimates in this report.

Source: Esri forecasts for 2021 and 2026.



Civilian Labor Force Profile

31 Silvermine Rd, Seymour, Connecticut, 06483
 Ring Band: 5 - 10 mile radius

Prepared by Esri
 Latitude: 41.39508
 Longitude: -73.05016

2021 Labor Force

Age Group	Population	Employed	Unemployed	Unemployment Rate	Labor Force Participation Rate	Employment-Population Ratio
16+	311,642	184,062	19,510	9.6%	65.3%	59
16-24	53,688	24,916	4,255	14.6%	54.3%	46
25-54	145,884	112,537	10,976	8.9%	84.7%	77
55-64	48,472	30,948	2,973	8.8%	70.0%	64
65+	63,598	15,661	1,305	7.7%	26.7%	25

Economic Dependency Ratio

Total	103.6
Child (<16)	34.8
Working-Age (16-64)	42.8
Senior (65+)	26.0

Industry	Employed	Percent	US Percent	Location Quotient
Total	184,062	100.0%	100.0%	-
Agriculture/Forestry/Fishing	366	0.2%	1.3%	0.15
Mining/Quarrying/Oil & Gas	62	0.0%	0.4%	0.00
Construction	9,505	5.2%	7.1%	0.70
Manufacturing	18,088	9.8%	9.9%	0.92
Wholesale Trade	4,178	2.3%	2.5%	0.92
Retail Trade	17,577	9.5%	10.7%	0.98
Transportation/Warehousing	6,500	3.5%	5.1%	0.74
Utilities	1,155	0.6%	0.9%	0.67
Information	3,217	1.7%	1.8%	0.94
Finance/Insurance	8,987	4.9%	5.2%	1.00
Real Estate/Rental/Leasing	3,247	1.8%	1.9%	0.86
Professional/Scientific/Tech	12,966	7.0%	8.3%	0.85
Management of Companies	256	0.1%	0.1%	1.00
Admin/Support/Waste Management	5,739	3.1%	3.7%	0.79
Educational Services	29,983	16.3%	9.3%	1.68
Health Care/Social Assistance	36,414	19.8%	14.8%	1.31
Arts/Entertainment/Recreation	3,044	1.7%	1.5%	1.06
Accommodation/Food Services	8,716	4.7%	5.9%	0.84
Other Services (Excluding Public)	7,023	3.8%	4.5%	0.83
Public Administration	7,039	3.8%	5.2%	0.79

Data Note: Location Quotients compare the industry/occupation share of a local area's employment relative to that same share nationally. A value lower/greater than 1 indicates that the local area is less/more specialized in that industry or occupation category than the US as a whole.

Explore the Esri Labor Force Learn Lesson for more information on how to use and interpret the estimates in this report.

Source: Esri forecasts for 2021 and 2026.



Civilian Labor Force Profile

31 Silvermine Rd, Seymour, Connecticut, 06483
 Ring Band: 5 - 10 mile radius

Prepared by Esri
 Latitude: 41.39508
 Longitude: -73.05016

Occupation	Employed	Percent	US Percent	Location Quotient
Total	184,062	100.0%	100.0%	-
White Collar	123,821	67.3%	63.1%	1.09
Management	21,879	11.9%	11.8%	1.17
Business/Financial	10,428	5.7%	6.1%	1.12
Computer/Mathematical	6,131	3.3%	3.9%	1.10
Architecture/Engineering	3,350	1.8%	1.9%	0.90
Life/Physical/Social Sciences	4,041	2.2%	1.1%	2.44
Community/Social Service	4,701	2.6%	1.9%	1.44
Legal	2,738	1.5%	1.2%	1.25
Education/Training/Library	16,925	9.2%	6.1%	1.44
Arts/Design/Entertainment	3,832	2.1%	1.9%	1.17
Healthcare Practitioner	15,523	8.4%	6.8%	1.33
Sales and Sales Related	15,706	8.5%	9.3%	0.88
Office/Administrative Support	18,567	10.1%	11.2%	0.76
Blue Collar	28,799	15.6%	21.8%	0.73
Farming/Fishing/Forestry	246	0.1%	0.6%	0.12
Construction/Extraction	6,702	3.6%	5.2%	0.67
Installation/Maintenance/Repair	3,642	2.0%	2.9%	0.65
Production	7,252	3.9%	5.2%	0.66
Transportation/Material Moving	10,957	6.0%	7.9%	0.98
Services	31,443	17.1%	15.1%	1.01
Healthcare Support	9,740	5.3%	3.5%	1.96
Protective Service	4,126	2.2%	2.1%	1.00
Food Preparation/Serving	7,386	4.0%	4.3%	0.91
Building Maintenance	5,885	3.2%	3.3%	0.82
Personal Care/Service	4,306	2.3%	1.8%	0.64

Data Note: Location Quotients compare the industry/occupation share of a local area's employment relative to that same share nationally. A value lower/greater than 1 indicates that the local area is less/more specialized in that industry or occupation category than the US as a whole.

Explore the Esri Labor Force Learn Lesson for more information on how to use and interpret the estimates in this report.

Source: Esri forecasts for 2021 and 2026.