



HOULIHAN LAWRENCE
WARECK D'OSTILIO

New Haven * Milford * Woodbridge * Branford * Old Saybrook

2,000 +/- SF OFFICE SPACE FOR LEASE!!

175 Washington Ave, Bridgeport, CT

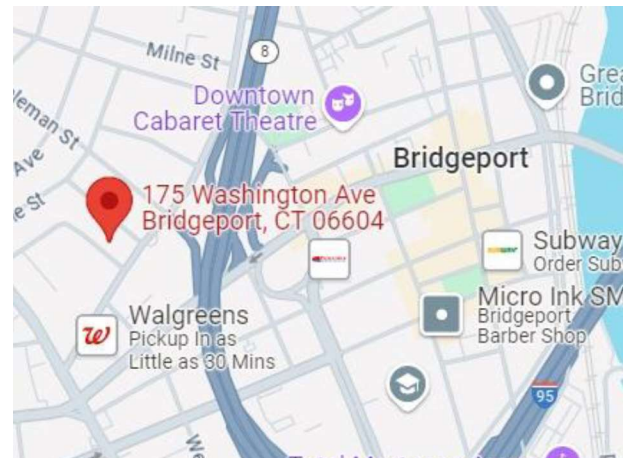


**OFFICE / RETAIL FOR LEASE
\$2,500 + Util.**

Second Floor Office Space



- Close to I-95
- 2,000 SF Perfect for Law Offices / Real Estate Team
- Abundant natural light
- 1 bathroom
- Waiting Room / Reception Area



Houlihan Lawrence Wareck D'Ostilio
New Haven * Milford * Woodbridge * Branford * Old Saybrook



HOULIHAN LAWRENCE
WARECK D'OSTILIO

New Haven * Milford * Woodbridge * Branford * Old Saybrook

Property Information

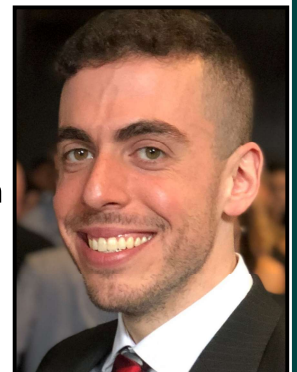
Total Building SF	6,160 SF
Available SF	2,000 +/- SF
Year Built	1988
Ceiling Height	9'
City Water/Well	City Water
City Sewer/Septic	City Sewer
Loading Dock	N/A
Overhead Door	N/A
Construction	Frame
HVAC	Central Air
Electric	N/A
Column Spacing	N/A
# of Floors	2
Roof	Asphalt Shingle
Parking	Paved
Zoning	RC
Environmental	N/A
Assessment	\$398,479
Taxes	N/A
Taxes / SF	N/A

175 Washington Ave Bridgeport, CT

Comments:
2000 +/- SF Office Space ideal for a team of professionals located in a high traffic area just off I-95 in Bridgeport CT. 1 Bathroom, 4 Office Spaces, and a waiting area.

Jeremy Goun
Broker
(631) 678-3642
jeremy@kngrealty.com

174 Cherry Street
Milford CT 06460
(203) 701-4848



This document has been prepared by HLWD Commercial for advertising and general information only. HLWD Commercial makes no guarantees, representations or warranties of any kind, expressed or implied, regarding the information including, but not limited to, warranties of content, accuracy and reliability. Any interested party should undertake their own inquiries as to the accuracy of the information. HLWD Commercial excludes unequivocally all inferred or implied terms, conditions and warranties arising out of this document and excludes all liability for loss and damages arising there from. This publication is the copyrighted property of HLWD Commercial and/or its licensor(s). ©2018. All rights reserved.