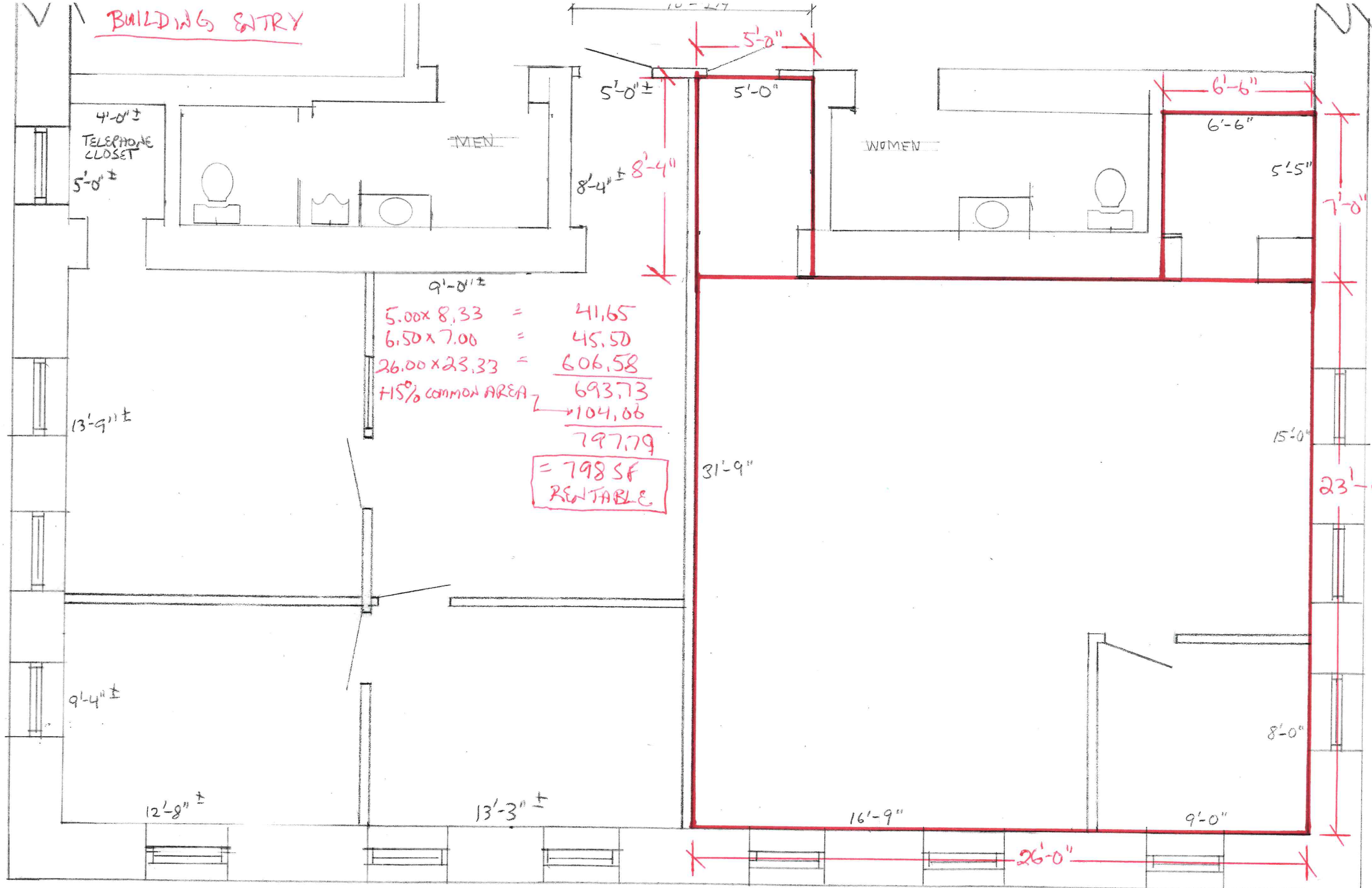


BUILDING ENTRY



$5.00 \times 8.33 = 41.65$   
 $6.50 \times 7.00 = 45.50$   
 $26.00 \times 23.33 = 606.58$   
 15% COMMON AREA  $\rightarrow 693.73$   
 $\rightarrow 104.06$   


---

 $797.79$   
 = 798 SF RENTABLE

7'-7 1/2"  
 13'-9 1/2"  
 9'-4 1/2"  
 12'-8 1/2"

5'-1 1/2"  
 1'-11 1/2"  
 23'-2 3/4"  
 8'-0"  
 15'-0"  
 23'-4 1/2"  
 7'-0"  
 5'-5"  
 6'-6"  
 6'-6"  
 5'-0"  
 5'-0"  
 5'-0"

52'-8 1/2"  
 57'-3"

100 BANK STREET, SEYMOUR CT

FIRST FLOOR SEYMOUR