

100 BANK STREET  
SEYMOUR CT  
4th FLOOR, NORTH SIDE

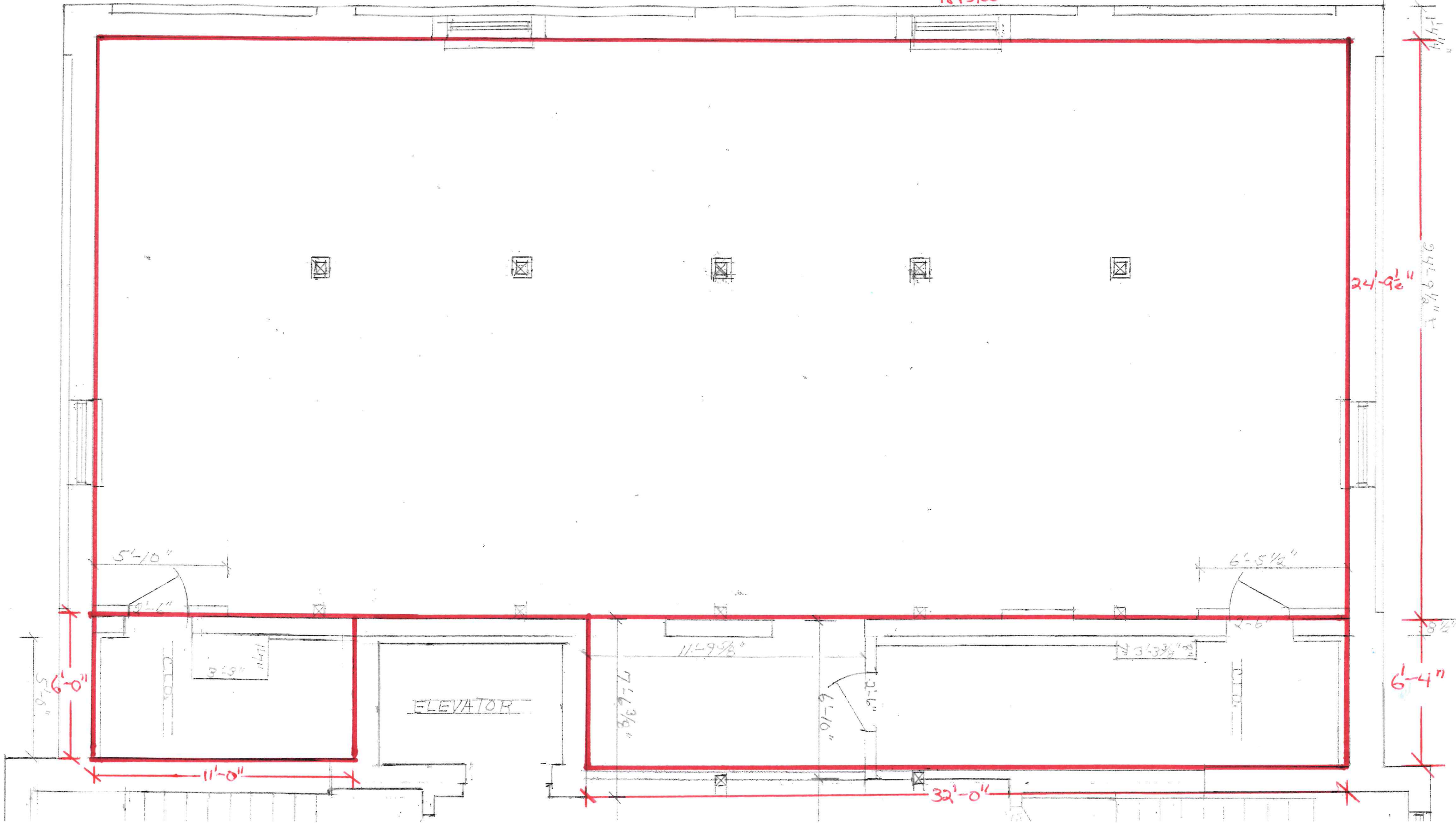
56'-6"

53'-9<sup>3</sup>/<sub>4</sub>"

$$\begin{aligned} 53.81 \times 24.79 &= 1334.10 \\ 11.00 \times 6.00 &= 66.00 \\ 32.00 \times 6.33 &= 202.56 \\ \hline \text{TOTAL} &= 1602.66 \\ +15\% \text{ COMMON AREA} &= 240.40 \\ \hline &1843.06 \end{aligned}$$

**= 1843 SF REATABLE**

32'-1"



24'-9<sup>1</sup>/<sub>2</sub>"

6'-4"

32'-0"

ELEVATOR